

Histology Med-Device Services

A Comprehensive Service Range - From Sectioning To Sequencing - GxP/CLIA/CAP Lab



Custom processing services for frozen and formalin-fixed paraffin-embedded tissues. We use NanoZoomer S60 Digital slide scanning which supports both brightfield and fluorescence imaging.

Service Overview

Histology Services: Grossing, Decalcification, Paraffin and Frozen

Routine H&E Stain, Special Stains, RNA Stain, Protein Stain

Data Generation

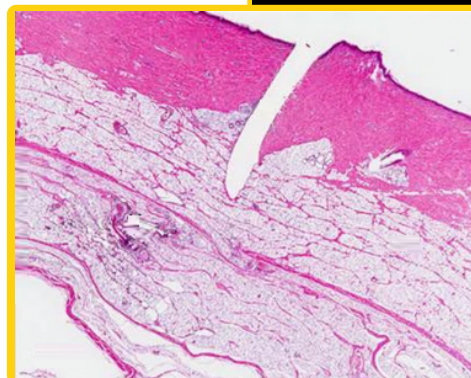
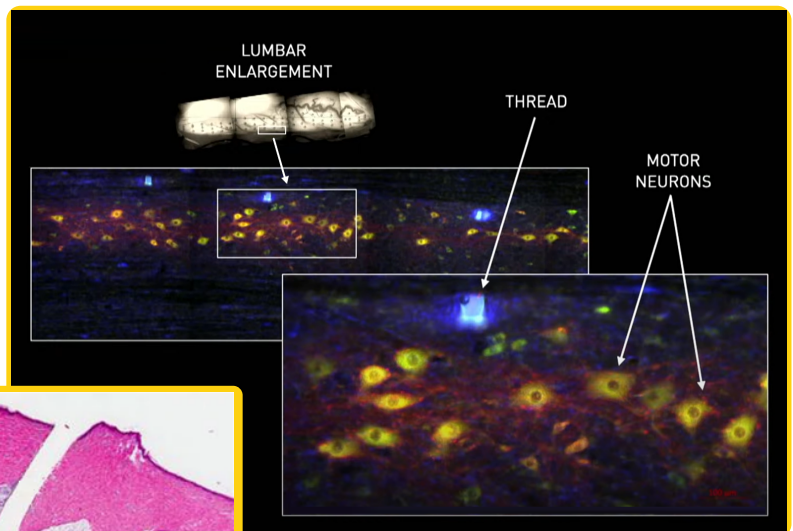
Spatial Transcriptomics

Implanted Tissue Types

- Subcutaneous
- Orthopedic
- Gastrointestinal
- Nervous and more

Medical Device Testing

- ISO 10993-6 tests for local effects after implantation
- ISO 10993-11 for systemic toxicity



INQUIRE ABOUT OTHER TISSUE TYPES & STAINS

Flexibility and Convenience

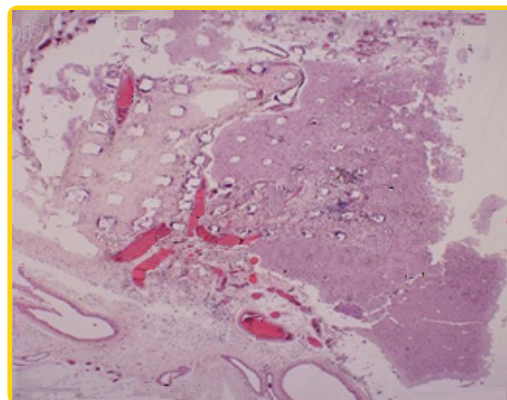


Your S.F. Bay Area Advantage!
SeqMatic's premium "Fetch-Seq™" courier pick-up in the S.F. Bay Area

State of California
board-certified
pathologist on staff

Tissue Types

- Bone
- Liver
- Kidneys
- Brain
- Heart
- Skin and more



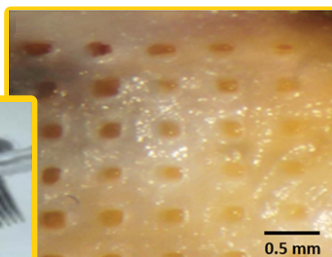
Service Highlights

Histology Services

- Grossing
- Decalcification
- Paraffin and Frozen
 - Processing
 - Embedding
 - Sectioning

Data Generation

- Whole Slide Imaging (WSI)
- Image Analysis (IA)
- Pathology Report



Routine H&E Stain

Special Stains (examples)

- Trichrome
- Alcian Blue
- Oil Red O
- Von Kossa
- Periodic Acid Schiff
- Toluidine Blue
- Luxol Fast Blue

RNA Stain

- In Situ Hybridization (ISH)
- w/Fluorescence (FISH)

Protein Stain

- Immunohistochemistry (IHC)
- Immunofluorescence (IF)

[INQUIRE ABOUT OTHER TISSUE TYPES & STAINS](#)

Image Credits & Citations

Front Page

- Neuralink Show and Tell, 2022
- Timmins, L., Miller, M., Clubb, F. et al. Increased artery wall stress post-stenting leads to greater intimal thickening. *Lab Invest* 91, 955–967 (2011).
- Hauzenberger, J.R., Münzker, J., Kotzbeck, P. et al. Systematic in vivo evaluation of the time-dependent inflammatory response to steel and Teflon insulin infusion catheters. *Sci Rep* 8, 1132 (2018).

Back Page

- Linda J Szymanski et al 2021 *J. Neural Eng.* 18 0460b9
 - Image of Imprint of the BA5 MEA implant site after removal.
 - Image of side-on view of an MEA showing rows of 1.5 mm long microelectrodes.
 - Image of magnification of site after removal of the MEA.



Request a Quote

sales@SeqMatic.com

1.510.870.0965