

Histology Services

A Comprehensive Service Range - From Sectioning To Sequencing - CLIA/CAP Lab

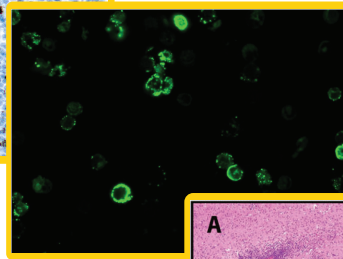
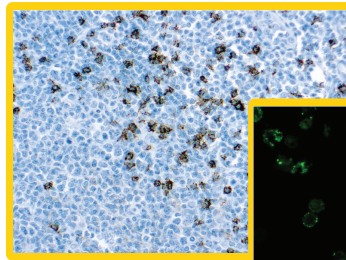


Custom processing services for frozen and formalin-fixed paraffin-embedded tissues. We use NanoZoomer S60 Digital slide scanning which supports both brightfield and fluorescence imaging.

Service Highlights

Histology Services

- Grossing
- Decalcification
- Paraffin and Frozen
 - Processing
 - Embedding
 - Sectioning



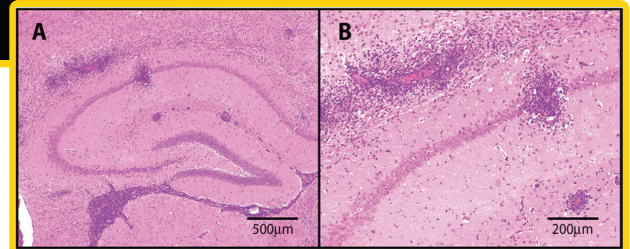
Tissue types

- Bone
- Liver
- Kidneys
- Brain
- Heart
- Skin and more

Routine H&E Stain

Special Stains (examples)

- | | |
|---------------|------------------------|
| ▪ Trichrome | ▪ Periodic Acid Schiff |
| ▪ Alcian Blue | ▪ Toluidine Blue |
| ▪ Oil Red O | ▪ Luxol Fast Blue |
| ▪ Von Kossa | |



RNA Stain

- In Situ Hybridization (ISH)
- w/Fluorescence (FISH)

Protein Stain

- Immunohistochemistry (IHC)
- Immunofluorescence (IF)

Data Generation

- Whole Slide Imaging (WSI)
- Image Analysis (IA)
- Pathology Report

INQUIRE ABOUT OTHER TISSUE TYPES & STAINS

Flexibility and Convenience



*Your S.F.
Bay Area Advantage!*
SeqMatic's premium "Fetch-Seq™"
courier pick-up in the S.F. Bay Area

**State of California
board-certified
pathologist on staff**