

Visium Spatial Transcriptomics

Map the whole transcriptome with morphological context
from FFPE or fresh frozen tissues

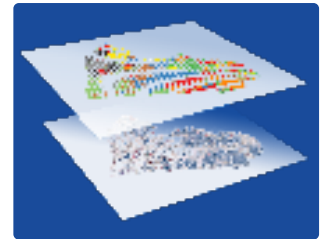


Service Highlights

Compatibility with FFPE and fresh frozen tissue samples

High-sensitivity and specificity across entire tissue sections

- Biomarker discovery from archival tissue samples
- Compatibility with two capture area sizes for more flexibility
- Near single-cell resolution depending on tissue type



Certified
Service Provider

Can deliver data on a diverse set of organs across any species

- Human, mouse, rat, and more

Whole transcriptome or probe-based profiling from an entire section

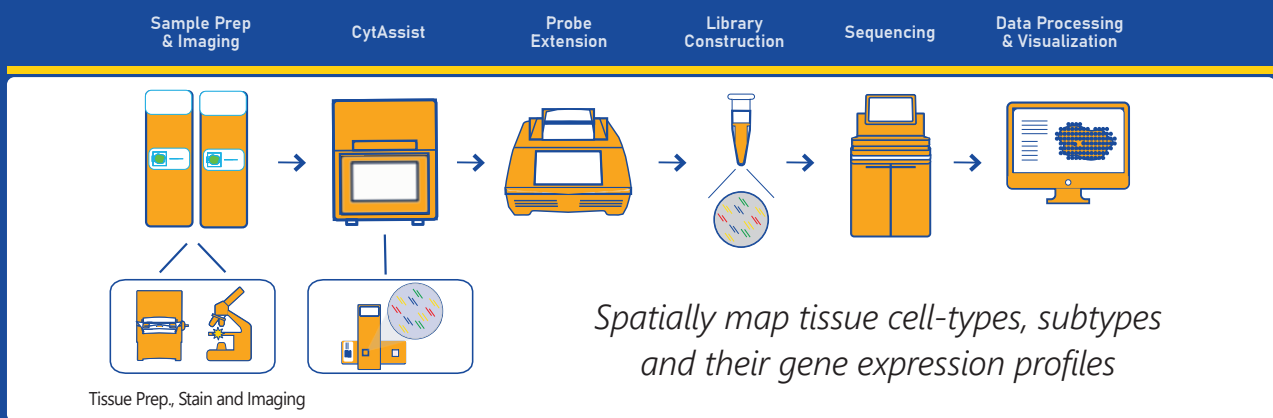
- Discovery of new biomarkers
- Complete visualization of disease complexity
- Mapping of spatial organization of cell atlases

Visium Spatial

Available in both
standard and HD
resolution

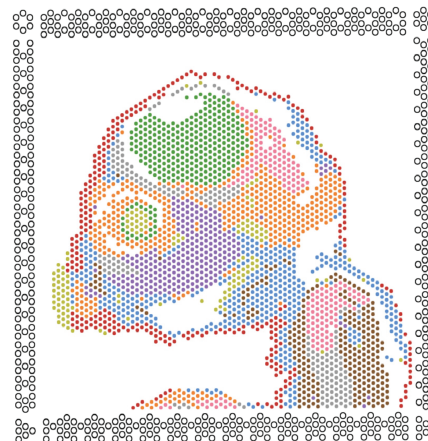
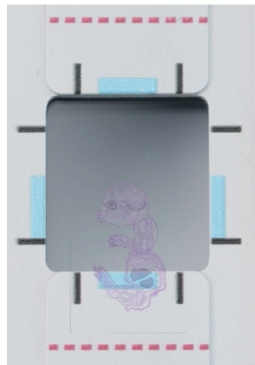
Transcriptome and protein relationships analysis - Study protein co-detection of novel cell types and their spatial organization sections by combining spatial analysis with immunofluorescence protein detection

Visium CytAssist Workflow



Precise selection of tissue

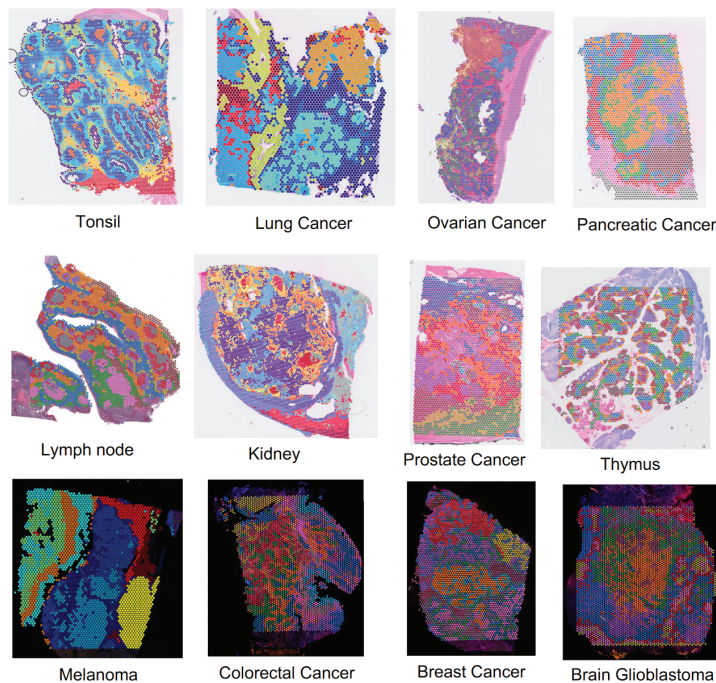
Whole transcriptome discovery
in the tissue context



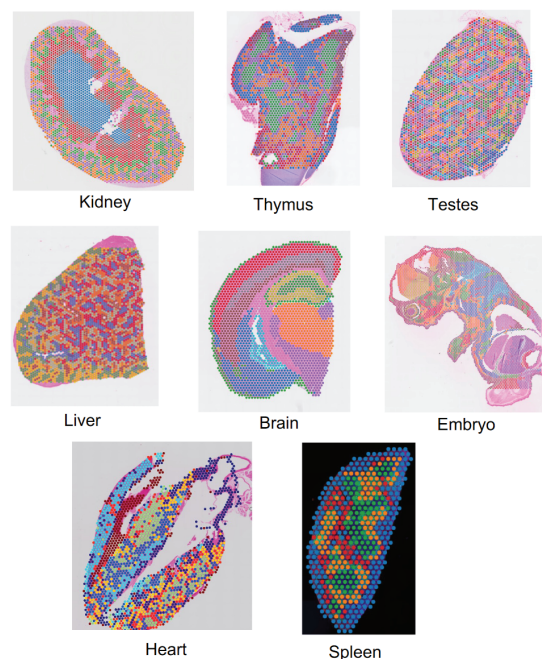
Visium Datasets

Sample types generated with Visium Spatial solutions

Human



Mouse



Request a Quote

sales@SeqMatic.com

1.510.870.0965